

Equipment Access Program

934 SW Salmon St. Portland, OR 97205
503.221.1156 x30
www.nwfilm.org/equipment

DIGITAL CINEMA/HD VIDEO

Arri Alexa EV Classic *	inquire**	\$400
Canon XF-305	\$100	\$50
Canon XA10	\$50	\$25
JVC Everio EX555	\$20	\$10

*Not included in rental special deal. Must attend workshop prior to use.

** This camera is meant as a resource for low budget indie filmmakers.

SD VIDEO

Mini-DV Cameras

Panasonic DVX 100 A/B	\$40	\$20
Panasonic PVGS	\$10	\$5
Sony HC-26 / 40	\$10	\$5
Canon ZR-80	\$10	\$5

FILM

16mm Sync Sound Cameras

Arri SR1 Kit	\$80	\$40
<ul style="list-style-type: none"> •5-75 fps Variable Speed Motor •(3) 400' Magazines •(2) On-board batteries + charger •Pistol Grip •Matte Box w/ (2) 3x3 filter slots •Zeiss 10-100mm T2 •3x3 Glass Filter Set 		

Éclair NPR Kit

<ul style="list-style-type: none"> •24 fps Motor •(2) 400' Magazines •(2) Batteries + charger •Ruber lens shade •Angenieux f2.2 9.5-95mm zoom lens •86mm 85 filter, 86mm SKY-1A filter, 86mm 4 1/2 adapter with additional individual filters available 	\$80	\$40
---	------	------

16mm Non-Sync Sound Cameras

Arri S Kit	\$60	\$30
<ul style="list-style-type: none"> •Variable Speed Motor •(1) Battery + charger •Matte box w/ 2 stage filter holder •Schneider-Kreuznach Xenon f1.9 16mm, f1.5 25mm, f2 50mm primes •ND0.3 gel, 85 glass filter, Wratten 85BN3 filter 		

Arri S/B Kit

<ul style="list-style-type: none"> •24 fps Motor •(1) Battery + charger •Choice of: Schneider-Kreuznach Xenon f1.9 16mm, Schneider-Kreuznach Xenon f2 50mm, Carl Zeiss Distagon f2.2 8mm primes OR Angenieux f2.2 12-120mm zoom lens w/ series 9 filter holder 	\$60	\$30
---	------	------

Bolex Kit

<ul style="list-style-type: none"> •Choice of: Rex 5, Rex 4 or Rex 2 model •Choice of: zoom lens OR set of (3) primes, and filters •Pistol Grip 	\$40	\$20
--	------	------

Bolex Lenses, Filters + Slides

Lenses, filters + slides available to rent individually

commercial / artist

Super8 Cameras

Beaulieu 4008 ZMII	\$40	\$20
<ul style="list-style-type: none"> •Rechargeable NiCd Battery + Charger •4-pin XLR adapter cable •Detachable Schneider 6-66mm zoom lens with macro •Accepts C-mount lenses •2, 4, 8, 18, 24, 36, 50, 70 fps •Shoots all film stocks 		
Minolta XL-S-84	\$30	\$15
<ul style="list-style-type: none"> •7-56mm lens with macro •1, 18, 24 fps •Shoots Tri-X, 50D and 200T stocks 		
Canon 814 Autozoom	\$30	\$15
<ul style="list-style-type: none"> •7.5-60mm lens, 1, 12, 18, 24 fps •58mm UV filter •Shoots Tri-X, 50D and 200T stocks 		
Minolta 401/601 XL	\$20	\$10
<ul style="list-style-type: none"> •8.5-34mm lens •Intervalometer 1, 18 fps •46mm UV filter •Shoots Tri-X, 50D, 200T stocks 		
Chinon 20p/132p XL	\$10	\$5
<ul style="list-style-type: none"> •11-22mm zoom lens •18 fps •Tri-X, 50D, 200T stocks 		

CAMERA + VIDEO ACCESSORIES

Field Monitors		
Sony PVM 8020/8040/8042	\$15	\$10
Ikan VH8 HDMI Monitor	\$30	\$15
Light Meters		
Sekonic L-758	\$30	\$15
Minolta Spotmeter M	\$20	\$10
Pentax V Digital Spotmeter	\$20	\$10
Sekonic L-398M	\$20	\$10
Various		
Teleprompter/Intertron	\$40	\$20
Slate	\$10	\$5
Grey Card	\$3	\$2
Video Cables + Couplers	\$1	\$1
Mini-splitter, Mini-extender	\$1	\$1
Filters (various)	\$1	\$1

CAMERA SUPPORT

TriPods		
Benro (Small)	\$30	\$15
Manfrotto 3100/128RS (Small)	\$20	\$10
Manfrotto 503/504 (Medium)	\$30	\$15
Manfrotto 3066 (Large)	\$30	\$15
High Hats		
Manfrotto 529	\$20	\$10
Tracking + Support		
Expanding Portable Jib Arm	\$30	\$15
Bogen Wheels	\$10	\$5
Wheel Chair	\$15	\$10
Shoulder Mount	\$15	\$10
Homemade 11' Track/Dolly (flatbed truck required for pick-up)	\$50	\$25

ELECTRIC

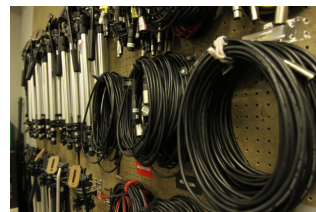
commercial / artist

Light Kits		
1 Arri Fresnel (1) 1K Open Face (2) 650w Fresnel (1) 300w Fresnel (4) Barndoors, (4) Lightstands Softbox w/ Speedring, Scrim, Replacement bulbs	\$70	\$50
2 Arri Fresnel (2) 1K Fresnel (2) 650w Fresnel (4) Barndoors, (4) Lightstands Softbox w/ Speedring, Scrim, Replacement bulbs	\$70	\$50
3 Arri Open Face (1) 1K Open Face (1) 650w Open Face (1) 500w Open Face (3) Barndoors, (3) Lightstands Scrim, Replacement bulbs	\$60	\$30
4 Lowel DP Open Face (2) 1K Open Face (1) 750w Open Face (1) 500w Open Face (4) Barndoors, (4) Lightstands Softbox w/ Speedring, Scrim, Replacement bulbs	\$60	\$30
5 Lowel Omni (3) 500w Open Face (3) Barndoors, (3) Lightstands Scrim, Replacement bulbs	\$50	\$25
6 Lowel Combo (1) 500w Omni + Barndoor (1) 250w Pro + Barndoor (1) Tota Light (1) 500w Rifa Softbox (4) Lightstands	\$40	\$20
Individual Lights		
Lowel Rifa Exchange 750w	\$40	\$20
Arri Fresnel 2K	\$40	\$20
Cool Lights CL-455 900W	\$40	\$20
Fotodiox LED (on-camera or stand-alone)	\$20	\$10
Cineo Tricolor LED	\$40	\$20
MiniMole Fresnel 200W	\$20	\$10
Smith Victor 300W Scoop	\$10	\$5
Lowel iLight	\$10	\$5
Dedolight 150w spot + dimmer	\$20	\$10
Distribution		
Stingers + Power Strips	\$3	\$1
Dimmer (15amp)	\$15	\$10
Lighting Accessories		
Butterfly Frame Green Screen	\$60	\$30
4x6 Collapsing Reflector	\$10	\$5
Grip Clips + Cardellini Clamp	\$3	\$2
Green Screen Background (C-Stands separate)	\$40	\$20
Apple Box (full only)	\$5	\$3
Sand Bag	\$3	\$1
Gels + Diffusion, Black Wrap	\$1	\$1
Party Pack	\$10	\$5
Duveltyne (small/med/lrg)	\$3	\$2
Cuculoris	\$5	\$2
Bounce Cards (white, silver/gold, silver/white)	\$3	\$2
Bag of C-47s	\$5	\$3
Gloves	\$3	\$2

AUDIO

commercial / artist

Audio Recorders		
Sound Devices 702 •AC Adapter / Batteries •2GB Compact Flash Card •Portabrace Carrying Case	\$75	\$50
Marantz PMD-660 Solid State •AC Adapter / Charger •1GB Compact Flash Card •Portabrace Carrying Case	\$30	\$15
Zoom H4n Recorder •AC Adapter / Charger •SD Card •Windscreen •Mic Clip Adapter	\$40	\$20
Mixers		
Sound Devices 302	\$30	\$15
Sound Devices MixPre	\$15	\$10
Shotgun Mic Kits		
Sennheiser ME66 •K6 Power Capsuler •Choice of: Rycote Suspension + Zepplin + Windsock OR Rycote Softie with Shockmount + Pistol Grip	\$40	\$20
Sennheiser 416 •Rycote Softie with Shockmount + Pistol Grip	\$50	\$25
Røde NTG-3 •Foam Wind Shield •Pistol Grip Shock Mount •Mic Stand Mount	\$30	\$15
Lavaliers		
Sennheiser EW 100 Wireless System	\$30	\$15
Audio Technica (hard wired)	\$15	\$10
USB Microphone		
Yeti Condenser USB Microphone	\$15	\$10
Omnidirectional		
Shure SM58 / SM57 / SM48	\$10	\$5
Audio Accessories		
Boom Pole	\$15	\$10
Boom Support	\$2	\$2
Mic Stand / Tabletop Mic Stand with Clip	\$3	\$2
Sony MDR-7506 / MDR-ZX100 Headphones	\$10	\$5
25' Non-Breakaway XLR Cable	\$5	\$3
25' Breakaway XLR Cable	\$10	\$5
XLR Cable (variety of lengths) / Adapters	\$3	\$2
Mini Extenders + Splitters	\$1	\$1



All Rates **PER DAY**, Unless Listed Otherwise

Reservations Only with **48 Hour** Notice

503.221.1156 x30 // RESERVE@NWFILM.ORG

GRIP

commercial / artist

Flag Kits

Large 24" x 36" Kit (2) Solids (1) Silk (1) Single Scrim (1) Double Scrim	\$20	\$10
Small 18" x 24" Kit (2) Solids (1) Silk (1) Single Scrim (1) Double Scrim	\$15	\$8
Collapsible Flag	\$15	\$8
Stands		
C-Stand + Arm/Knuckle	\$6	\$3
Bogen 3086 Light Stand	\$4	\$2
Baby Stand	\$5	\$3

POST

per hour / 8 hr day

Digital Audio Workstation

27" iMac •Blue Microphones Yeti USB Mic •Mackie 12 Channel Mic/Line Mixer •Cassette, CD, DAT Decks •Mini DV/DVcam Deck •SD/CF Card Reader •Avid Media Composer 6.5 + Avid Software Suite •Final Cut Pro 7, X + FCP Software Suite •DVD Burner	\$10	\$40
--	------	------

Digital Video Workstation

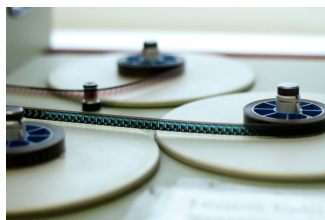
Mac Pro Tower or 27" iMac •Avid Media Composer 6.5 + Avid Software Suite •Final Cut Pro 7, X + FCP Software Suite •SD/CF Card Reader •Mini DV/DVcam Deck •DVD Burner	\$10	\$40
--	------	------

16mm Flatbed Edit Workstation

Moviola 6 Plate Flatbed •Rewind Table •Split Reel, Cores •Viewer •Splicer + tape •Sync Block	\$10	\$40
Optical Printer •JK-104 with 16mm / Super 8 Gates	\$20	\$50

SERVICES

16mm and Super 8 Digital Dailies	\$10
Super 8 or Regular 16mm formats. Price is per 50' of Super 8 or 100' of 16mm. Tri-X film stocks only.	



FILM STOCK + PROCESSING

Super 8 (50ft)

Raw Filmstock	
Tri-X (B+W Reversal)	\$21
VISION 3 50D (Color Negative)	\$26
VISION 3 200T (Color Negative)	\$26
VISION 3 500T (Color Negative)	\$26
Film Processing	
Tri-X (B+W Reversal)	\$22
50D, 200T, 500T (Color Negative)	\$22
Force Processing Per Stop Per Cartridge (push/pull)	
Tri-X (B+W Reversal)	+\$10
50D, 200T, 500T (Color Negative)	+\$10

16mm (100ft)

Raw Filmstock	
Tri-X (B+W Reversal) (7266)	\$38
Double-X (B+W Negative) (7222)	\$36
VISION 3 50D (Color Negative) (7203)	\$46
VISION 3 250D (Color Negative) (7207)	\$46
VISION 3 200T (Color Negative) (7213)	\$46
VISION 3 500T (Color Negative) (7219)	\$46
Film Processing	
Tri-X (B+W Reversal)	\$28
Vision 50D, 250D, 200T, 500T (Color Negative)	\$27
Double-X (B&W Negative)	\$32
Force Processing Per Stop Per 100ft (push/pull)	
Tri-X (B+W Reversal)	+\$10
50D, 250D, 200T, 500T (Color Negative)	+\$10
<ul style="list-style-type: none"> •All stocks are Kodak filmstocks •All processing done off-site via CineLab. •Ask about 16mm + Super 8 scanning/transfer options. 	

MEDIA + SUPPLIES

Mini DV Tape	\$5
DVD	\$1
CD	\$50
Grey Card	\$10

PROJECTORS

commercial / artist

Digital Projector •InFocus IN2106 •1800/2500 (ECO/High) •1280 x 800 Native Resolution •16:10 Native Aspect Ratio •2000:1 Contrast Ratio	\$60	\$40
16mm Film Projector •Eiki SSL-O Projector	\$10/hr \$20 supervised	
Projector must be used on-site at the NW Film Center. Rate is hourly and includes room rental. Call to schedule a time.		
Super 8 Film Projector •Elmo Projector		
Projector must be used on-site at the NW Film Center. Rate is hourly and includes room rental. Call to schedule a time.		

All Rates **PER DAY**, Unless Listed Otherwise
Reservations Only with **48 Hour** Notice
503.221.1156 x30 // RESERVE@NWFILM.ORG

www.nwfilm.org/equipment
934 SW Salmon St. Portland, OR 97205

REQUIRED DEPOSITS

For Commercial + Artist Renters

Deposits can be made with **Credit/Debt Card** or **Cash** or **Cashier's Check**.
Alternatively we will accept proof of **Liability Insurance**.

Equipment Access Program

934 SW Salmon St. Portland, OR 97205
503.221.1156 x30
www.nwfilm.org/equipment

HD VIDEO

	deposit
AVCHD SD Card Cameras	
Canon XF-305	\$1000
Canon XA10 & XA25	\$1000
JVC Everio EX555	\$500

SD VIDEO

	deposit
Mini-DV Cameras	
Panasonic DVX 100 A/B	\$1000
Panasonic PVGS	\$500
Sony HC-26 / 40	\$500
Canon ZR-80	\$500

FILM

16mm Sync Sound Cameras	
Arri SR1 Kit	\$1000
Eclair NPR Kit	\$1000
16mm Non-Sync Sound Cameras	
Arri S Kit	\$1000
Arri S/B Kit	\$1000
Bolex Kit	\$500
Bolex Lenses, Filters + Slides	varies
Super8 Cameras	
Beaulieu 4008 ZMII	\$500
Sankyo	\$500
Canon 814 Autozoom	\$300
Minolta 401/601 XL	\$150
Chinon 20p/132p XL	\$50

CAMERA + VIDEO ACCESSORIES

Field Monitors	
Sony PVM 8020/8040/8042	\$500
Ikan VH8 HDMI Monitor	\$400
Light Meters	
Minolta Spotmeter M	\$300
Pentax V Digital Spotmeter	\$300
Sekonik L-398M / L-758	\$200
Various	
Teleprompter/Interrotron	\$200

CAMERA SUPPORT

	deposit
Tripods	
Manfrotto 3066 (Large)	\$800
Manfrotto 503 (Medium)	\$500
Manfrotto 3100/128RS (Small)	\$150
Benro (Small)	\$300
High Hats	
Manfrotto 529	\$500
Tracking + Support	
Bogen Wheels	\$200
Wheel Chair	\$100
Shoulder Mount	\$50
Homemade 11' Track/Dolly <small>(flatbed truck required for pick-up)</small>	\$75

ELECTRIC

Light Kits	
1 Arri Fresnel	\$1000
2 Arri Fresnel	\$1000
3 Arri Open Face	\$1000
4 Lowell DP Open Face	\$1000
5 Lowell Omni	\$800
6 Arri Open Face/Fresnel	\$1000
7 Lowell Rifa	\$800
Individual Lights	
Arri Fresnel 2K	\$1000
Arri Open Face 1K	\$400
Cool Lights CL-455 900W	\$1000
Fotodioxi LED (on-camera)	\$500
MiniMole Fresnel 200W	\$200
Smith Victor 300W Scoop	\$100
Distribution	
Dimmer (15amp)	\$100
Lighting Accessories	
Green Screen Background (C-Stands separate)	\$100

RESERVATIONS ONLY WITH 48 HOUR NOTICE

503.221.1156 x30, RESERVE@NWFILM.ORG

AUDIO

deposit

Audio Recorders	
Sound Devices 702	\$800
Marantz PMD-660 Solid State	\$150
Zoom H4n Recorder	\$350
Mixers	
Sound Devices 302	\$1000
Sound Devices MixPre	\$1000
Shotgun Mic Kits	
Sennheiser ME66	\$1000
Sennheiser 416	\$1000
Røde NTG-3	\$800
Lavaliers	
Sennheiser EW 100 Wireless System	\$1000
Samson UM1/77 Micro Wireless System	\$200
Audio Technica (hard wired)	\$150
USB Microphone	
Yeti Condenser USB Microphone	\$100
Omnidirectional	
Shure SM58 / SM57 / SM48	\$100
Audio Accessories	
K-Tech KE 89 Mic Boom Pole	\$200
Gitzo Aluminum Boom Pole	\$150
Boom Support	\$50
Mic Stand / Tabletop Mic Stand with Clip	\$50
Sony MDR-7506 / MDR-ZX100 Headphones	\$100
25' Non-Breakaway XLR Cable	\$150
25' Breakaway XLR Cable	\$225
XLR Cable (variety of lengths) / Adapters	none
Mini Extenders + Splitters	none

GRIP

Flag Kits	
Large (24" x 36") Kit	\$200
Small (18" x 24") Kit	\$150
Stands	
C-Stand + Arm/Knuckle	\$130
Bogen 3086 Light Stand	\$50
Baby Stand	\$100

PAYMENT

Payment must be made in full when picking up equipment. Forms of payment include cash, Visa, Mastercard, Discover, American Express, and personal checks with a valid drivers' license. A valid photo ID is required at the time of pick up (e.g. driver's license, state ID, or passport).

REFUNDS

If there is a problem due to equipment malfunction, a full or partial credit will be issued. Refunds are not issued for problems resulting from improper use of equipment or for incompatibility with equipment from other rental houses.

www.nwfilm.org
934 SW Salmon St. Portland, OR 97205

TERMS AND CONDITIONS

RESERVATIONS

Reservations are required and must be submitted at least 48 hours prior to check out date. We will confirm the reservation; submission doesn't guarantee reservation. We reserve the right to cancel any equipment rental up to 24 hours in advance should heavy student use prevent availability.

LOSS OR DAMAGE

The renter agrees to assume full responsibility for all rental equipment and also agrees to compensate the Northwest Film Center for any and all equipment that is lost, stolen or damaged. This includes payment for all repairs up to the full replacement value of the equipment if it is damaged beyond repair, and paying full replacement value for stolen or lost equipment. The renter will also be charged a rental fee for the time period in which damaged equipment is out for repair, or until payment is received for replacement of equipment.

DEPOSITS

A deposit for the full amount of the equipment or up to \$1,000 is required for every rental. The deposit must be made with a Visa, Mastercard, Discover or American Express credit card with a sufficient limit to accept the full amount of the deposit. The deposit is made in the form of an Authorization Hold, which holds funds in the amount of the deposit for 3-7 days. (Proof of Liability Insurance can be provided as an alternative, see below)

INSURANCE

Insurance coverage is recommended due to the high replacement value of some of the equipment. Proof of insurance may be requested and must include the following:

1. Be "all risk" and equal the total replacement value of all rented equipment.
2. Name the Northwest Film Center as the sole "loss payee."
3. Be on file with the Northwest Film Center before rental begins.

(Providing a Deposit is an alternative, see above)

CHARGES

All rates on the accompanying rental rate sheet are for one day. Late rental returns are subject to a fee no less than a half-day charge.

EQUIPMENT

It is highly recommended that you inspect all equipment before accepting the rental. Although the Northwest Film Center's inspection and maintenance protocols prevent most problems, it is not possible to predict all possible problems. Notify a staff person immediately of any problem with rental equipment.

CONTACT EQ ROOM FOR HOURS OF OPERATION

503.221.1156 x30, RESERVE@NWFILM.ORG